

# Teckentrup Supersize Sectional Garage Door Brochure 2025



ENQUIRIES@THEGARAGEDOORCENTRE.CO.UK  
TELEPHONE: 01933 229135  
MON - FRI 9:00AM - 5:00PM  
SAT 9:00AM - 1:00PM

# CARTECK SUPERSIZE.

Go big! The perfect solution for openings up to 8 metres wide.



**TECKENTRUP**  
DOOR SOLUTIONS

**HOME | SUPER-SIZE**

From the outside our Super-Size doors are indistinguishable from our "normal" sized garage doors - the same stunning profiles, the same attractive windows and finishes. They are just wider - Super-Size doors start above 5.5m (18'0") wide and reach 8.0m (26'3") wide in a single span.

Opening a Super-Size door is simple too - all are power operated by a remote control motor.

It is from the inside that Super-Size doors differ. The weight of a complete door at these sizes is considerable and safe operation is paramount. Consequently doors have up-rated fittings for all load bearing elements, strengthening stiffeners to the rear of each door section and the lifting mechanism is motor driven with torsion spring assistance. A monitored safety edge ensures the door stops and reverses should it encounter an obstruction. Teckentrup sectional doors meet all the safety requirements and provisions of EN 13241.



This view from the inside shows the standard configuration of front mount torsion spring lifting gear, direct drive motor and controls.

Doors have galvanised frame legs and are supplied without a header. The side seals enclose the edge of the galvanised frame leg so it is not visible from the outside of the garage opening.

**INSTALLATION POSITION & POWER**

Doors must be installed behind the opening reveal and require a 13Amp supply direct to the consumer unit for Direct Drive motors.



**Low headroom rear torsion spring option.**





#### LOW NOISE OPERATION

Robust roller blocks made of galvanized steel and ball bearing runner rails guarantee a long service life and low noise operation.



#### SIDE PROTECTION

A lateral guard prevents a hand from being accidentally caught between the frame and the runner rail.



#### SAFETY EDGE MECHANISM

Doors are factory fitted with a safety edge mechanism which stops the door if it comes into contact with an obstacle and photocells for non-contact detection.



#### FINGER PINCH PROTECTION

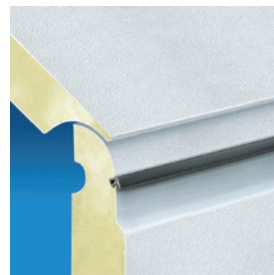
Outside/inside - Patented finger pinch protection for outside and inside of the door.



#### DIRECT DRIVE

Big doors need power and our direct drive motors are definitely up to the job! Intelligent control ensures safe operation at all times. Available for all door sizes.

**Works with the CarTeck Motor accessories.**



#### WEATHER STRIPS

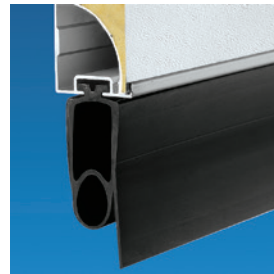
The door also has a weather strip at the sides, top and also between the individual sections across the entire width.



#### RAIL DRIVE

Available on doors from 5500mm-6500mm wide and 2280mm high, the CarTeck Drive PRO 1100 is suited to applications where sideroom is restricted.

**Works with the CarTeck Drive accessories.**



#### FLOOR SEAL

A rot-proof bottom weather strip made of elastic EPDM rubber profile sits against the floor and will compensate for minor variations in floor level to provide an improved barrier to debris and draughts.

#### WHAT PERFORMANCE CAN I EXPECT?

As part of the CE marking process, each product must have its performance provided for a defined set of characteristics to allow fair comparison between products from different manufacturers. Other characteristics can also be included, if relevant to a door's performance. The following table shows the performance characteristics of CarTeck Supersize sectional garage doors.

**TECKENTRUP**  
DOOR SOLUTIONS

#### PERFORMANCE CHARACTERISTIC

#### RATING

Resistance to Windload EN 12424	Class 2
Watertightness EN 12425	Class 2
Air Permeability EN 12426	Class 2
Thermal Transmittance EN 13241	1.29 W/m <sup>2</sup> k (door size 8000mm x 3000mm)
Operating Forces (hand Operated) EN 12604	150 N

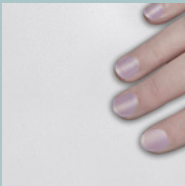
# Style Your Door

There are literally hundreds of possible combinations of texture and finish making it easy to adapt the door to suit your home.

Each profile is available in the textured finishes shown below plus all Trend colours or a special RAL colour.



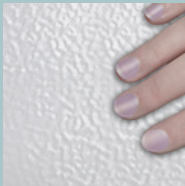
## SURFACE TEXTURES



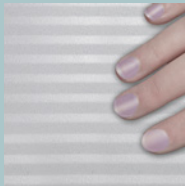
Smooth ☐



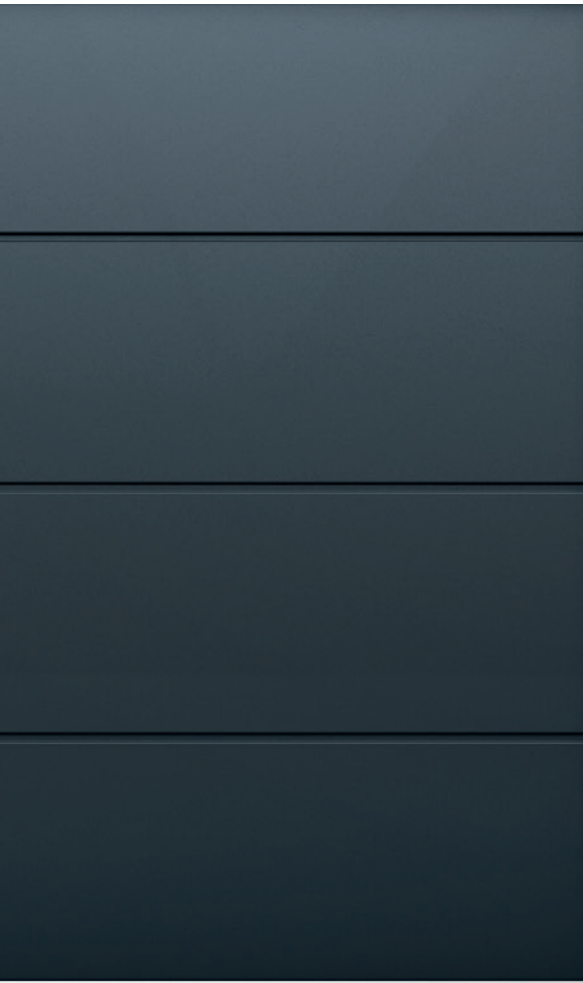
Woodgrain ☐



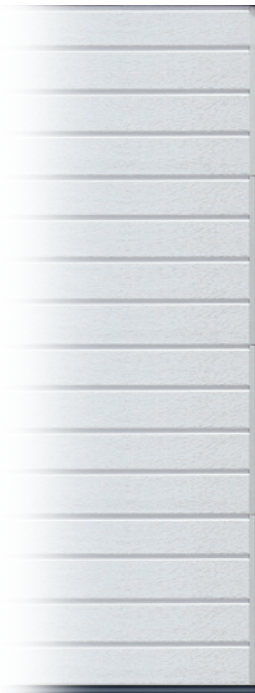
Stucco ☐



Micro-profiled ☐



## STANDARD RIB ☐



## CENTRE RIB ☐



## SOLID ☐



## A NOTE ABOUT COLOUR

Where doors are exposed to direct sunlight, dark colours should be avoided.

RAL references for colours are provided as a guide only to the nearest similar RAL colour. Colours will not match to other RAL finishes due to different coating processes, gloss levels, substrates and textures. Similarly, special RAL, BS, wood effects or other colours will not be a precise match.

Golden Oak & Winchester are laminate finishes. Night Oak & Rosewood have a painted finish.

If you are matching to other finishes, particularly wood effects such as rosewood, golden oak, night oak or Winchester, always request a sample.

Colours shown are limited in accuracy by the printing process - samples should always be requested.

Frame legs are galvanised finish only.

Trend colours

White

RAL 9016

TT9016 Bling White

with micaceous iron ore particles glitter effect

Ice Crystal Grey

Aluminium

White Aluminium

RAL 9006

Grey Aluminium

RAL 9007

Light Grey

RAL 7035

Window Grey

RAL 7040

Quartz Grey

RAL 7039

Umbra Grey

RAL 7022

Slate Grey

RAL 7015

Anthracite Grey

RAL 7016

Anthracite Textured

RAL 7016

TT 703

A special satin metallic effect (grey with micaceous iron ore particles)

Jet Black

RAL 9005

Steel Blue

RAL 5011

Moss Green

RAL 6005

Fir Green

RAL 6009

Flame Red

RAL 3000

Sepia Brown

RAL 8014

Cream

RAL 9001

Doors can also be coloured to any RAL shade

Wood effects

Golden Oak

Rosewood

Night Oak

Winchester

GLAZING OPTIONS

Scratch-resistant Polymer Double Pane Clear

Scratch-resistant Polymer Double Pane\* Frosted

Scratch-resistant Polymer Double Pane\* Satin

\*The exterior pane is Frosted/Satin and the interior pane is Clear.

WINDOWS

Rectangle 1

Cross Mullion

Square 1

Square 2

Rectangle 2

Rhombus Mullion

Rectangle 3

Aluminium light strip

HOW MANY WINDOWS WILL I HAVE - STANDARD RECTANGLE?

	7M	7.5M	8M
8 windows	9 windows	10 windows	

Window frames are coloured to be similar to the door panel. Selected Trend colours & wood design windows are finished in a complementary flat colour for Golden Oak (RAL8003), Rosewood (RAL8016), Night Oak (RAL8014), Winchester (RAL8001), Textured Anthracite (RAL7016), Ice Crystal Grey Aluminium (RAL9007) and TT9016 Bling White (RAL9016). Window frame colour shade and surface lustre will show a variance from the panel finish as the base material and coating methods are different.

TECKENTRUP

DOOR SOLUTIONS

01933 229135

www.thegaragedoorcentre.co.uk

07/25

# Keep your door looking its best



**2YR**  
**10YR**

**2 Year 10 Year Guarantee**

## MAINTENANCE

Doors must be maintained as per the supplied Installation, Operating and Maintenance Manual by a Garage Door Specialist. Failure to carry out the required maintenance at the advised interval will invalidate the warranty. These doors are very heavy and we strongly recommend an annual service to ensure the door is maintained in a safe condition.

## CLEANING ON INSTALLATION

After the installation has been completed, clean and dry the door thoroughly inside and out with warm soapy water to remove any grease, dust and metal fragments from the door (these will discolour the door finish if left on the door).

## CLEANING

The door should be washed with a car shampoo or similar, every two months, to prevent the build up of dirt, salt, grit and other corrosive substances. If the door is in an area prone to coastal corrosion from airborne salts, the door should be cleaned monthly. Furthermore, cleaning lifting gear with a cloth soaked in a light oil will help to protect your door from corrosion – it must be accepted that salt air is very aggressive and extra care is required.

No caustic, abrasive or corrosive chemicals and substances, flood water, water runoff, or runoff from lead, copper or galvanic metal flashing should be allowed to come into contact with the door.

Ash, cement, dust, animal waste, or foreign substances should be removed immediately. Failure to ensure the door is cleaned and maintained as described will invalidate the doors' warranty.

## 6 POINT GUARANTEE

The warranty periods below only apply to products that have been correctly installed as per the instructions, maintained by a Garage Door Specialist and operated and cleaned in accordance with the requirements set out in the operating and maintenance sections of instructions and labels.

### 2-year manufacturer's guarantee

- on polymer and aluminium window units
- on rollers, hinges, cable pulleys, cables and standard springs  
(opening/closing max. 5 times a day)

### 10-year manufacturer's guarantee

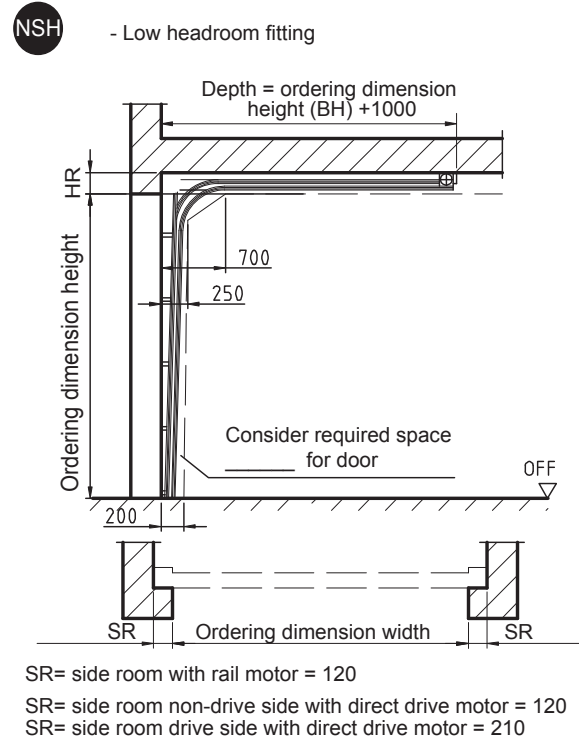
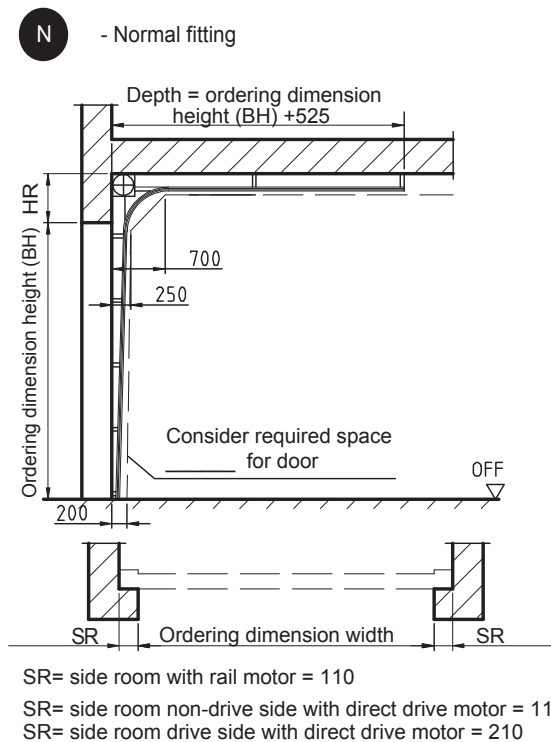
- on panels against rust penetration from inside to outside
- against door panel separation of steel from foam
- on material and manufacturing flaws of all non-moving parts of the frame that are verifiably unusable or whose usability is substantially compromised
- on floor seal, intermediate seals, side seals and lintel seal against rotting

The guarantee does not apply to doors that are subjected to extreme conditions, e.g. corrosive influences resulting from use in a coastal climate with high salt content.



# TECHNICAL INFORMATION

## DIMENSIONS AND CLEARANCES



## HR HEADROOM REQUIREMENT

Heights			Widths	6000	6500	7000	7500	8000
<b>4</b> Sections	2250 7'4"	Rail Operator	Stand Headroom	400	450	-	-	-
			Low Headroom	300	300	-	-	-
		Direct Drive	Stand Headroom	400	450	450	450	450
			Low Headroom	280	280	280	280	280
<b>5</b> Sections	2750 9'0"	Direct Drive	Stand Headroom	400	450	450	450	450
			Low Headroom	280	280	280	280	280
<b>6</b> Sections	3000 9'9"	Direct Drive	Stand Headroom	400	450	450	450	450
			Low Headroom	280	280	280	280	280

Max Width For Low Headroom = 7750

300mm low headroom with rail operator is to prevent the top panel seal rubbing on the rail  
 If this is not an issue then the door will fit in 280mm

## SPECIFICATION

### DOOR:

Sectional door double skinned PUR foam core, 40mm thick CarTeck panels. Outer surface finished in choice of 4 standard designs and all standard listed CarTeck colours. Inner surface stucco design, colour similar to RAL 9002. Sections have a centre seal; EPDM, header, and floor seals. Different order heights are made up from mixing panel sizes, 2 different bottom profile sizes and reduced top panel heights. Doors have reinforcing steel profiles on the rear of the panels.

### FRAME:

Door frame is made from hot dipped galvanised steel sections. Protective strips with EPDM sealing lips on both sides of the vertical tracks.

### HARDWARE:

Doors have galvanised frame legs and are supplied without a header strip. Hardware has galvanised finish, screwed hinges to all sections, adjustable rollers with ball bearings. Front or optional rear mounted torsion spring with load-bearing steel cables. 1 pair of tension bars.

### AUTOMATION:

Electric 230V drive as standard, either direct or rail drive. Optical safety edge, hard wired to control system and photocells. Direct drive motor must have 13 amp supply direct to consumer unit. External release is not possible with direct drive motor, additional access must be available into garage.

### Colours

RAL references for colours are provided as a guide only to the nearest similar RAL colour. Colours will not match to other RAL finishes due to different coating processes, gloss levels, substrates and textures. Similarly, special RAL, BS or other colours will not be a precise match.

The door panel, frames and window frame colour shade, and surface lustre will show some slight variation, this is due to different base materials and coating methods.



HOME | PROFILE

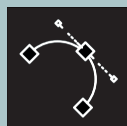
Teckentrup is a family business with operations throughout the world. In the UK, we make our garage doors in Warrington, Cheshire. CarTeck is available through a national network of independent Garage Door Specialist installers.

Teckentrup offers more than garage doors...  
We provide solutions and have set three quality standards for our garage doors:

# Design. Security. Service.



April 2025



## Design

### We combine ease of use with aesthetics

Good design uses innovative technology to make using a product intuitive and effortless. CarTeck garage doors offer a wide range of design options that will transform the look of your home and the way you use your garage space.



## Safety & Security

### We combine security with safety

Our products are designed to provide peace of mind with both physical security and the knowledge that durability and safe operation are inherent.



## Service

### We combine speed with reliability

The Teckentrup team and our network of Garage Door Specialists installers love to make your new door a pleasure to own. From planning to installation. You'll always receive expert advice and the best service for installation, maintenance and aftercare.

## Quality & Environment

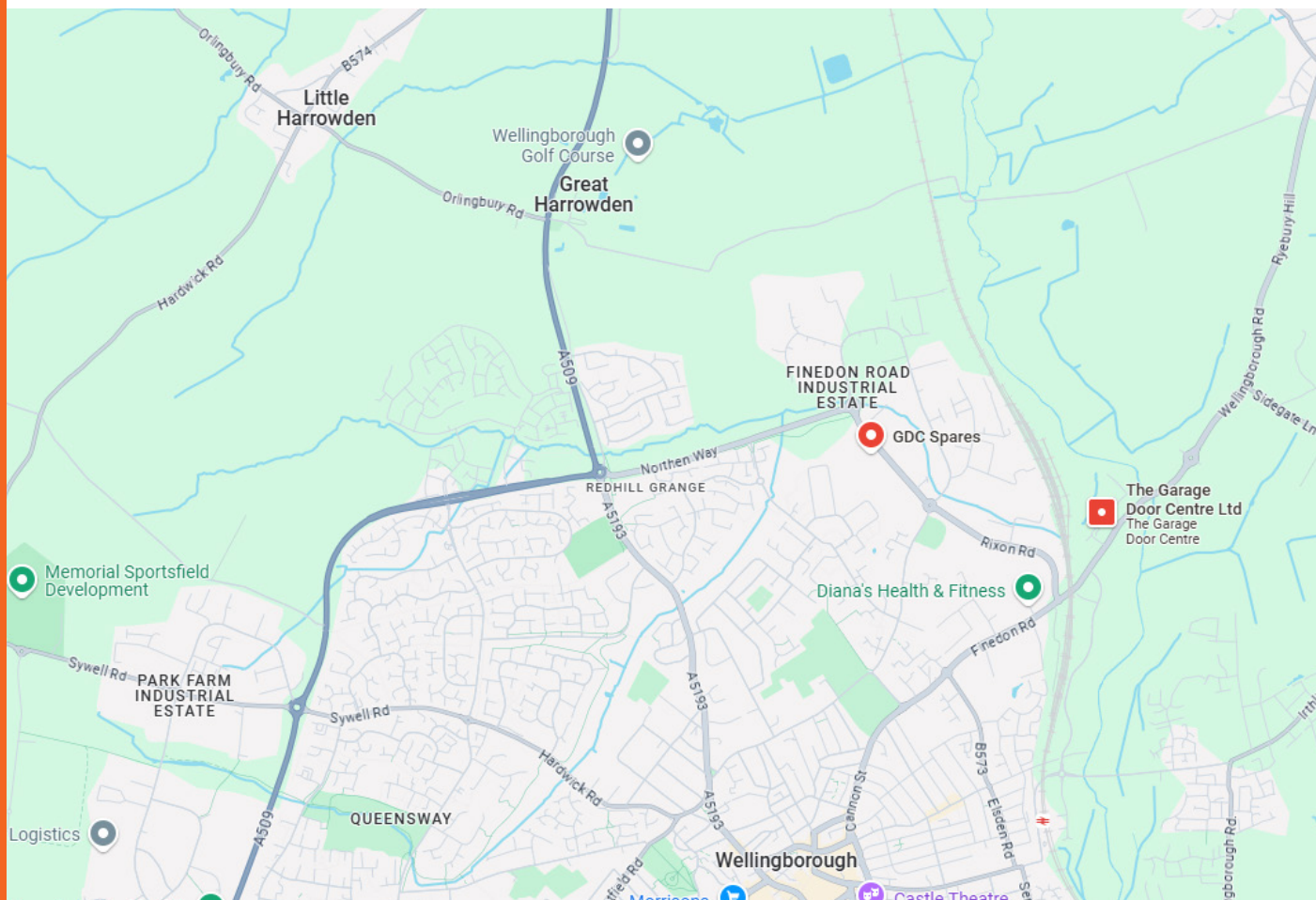
Teckentrup operates to quality procedures audited to ISO 9001. We care about the environment too - this is why our products are certified in accordance with the Environmental Product Declaration (EPD).



**ISO 14001 Environmental Management**  
**ISO 50001 Energy Management**

**TECKENTRUP**  
DOOR SOLUTIONS





6-8 MEADOW CLOSE,  
ISE VALLEY TRADING ESTATE  
FINEDON ROAD  
WELLINGBOROUGH  
NN8 4BH

ENQUIRIES@THEGARAGEDOORCENTRE.CO.UK  
TELEPHONE: 01933 229135  
MON - FRI 9:00AM - 5:00PM  
SAT 9:00AM - 1:00PM